



WWW.METRO.COM



Metro[®] value-added solutions:

Whether your top priority issues involve storage space, or security, or more efficient transport—our applications specialists can configure a "just right" solution—for you and your patients.

STORAGE AND SPACE ANALYSIS: Metro will provide you with a comprehensive storage and space analysis. We'll make recommendations on how to best use your available space and which cart is right for you. Best of all, this analysis is absolutely free.

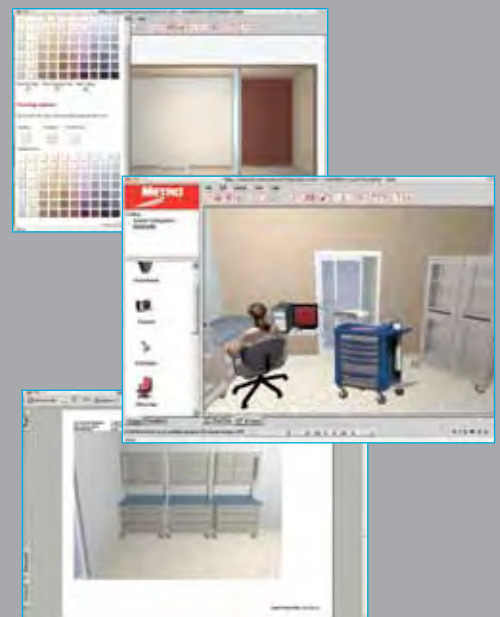
QUOTES: In addition to working with your available space, we also work with your budget. We'll provide you with quotes for the most cost-effective solution.

DRAWINGS/LAYOUTS: Based on our storage and space analysis, we can provide you with free layouts and drawings showing the best solution for your situation.

SELF SERVICE TOOLS: Our proprietary Metro Configurator lets you create room layouts and configure alternative scenarios to effectively use your space to best advantage. See for yourself, visit www.metroconfigurator.com

BUSINESS TOOLS:

- Web order status
- EDI
- Electronic order acknowledgement
- Report2web- order history



metroconfigurator.com



STARSYS™ Ultimate modularity. Unlimited choices.

When you think about space, you may think about efficiency.
Or better organization. Maybe the freedom to be flexible.

Complete Storage System- Addresses applications facility- wide.

Interchangeable Components- Provides flexibility to address changing needs.

Modular Design- Provides flexibility to change layout and/ or location.

Highly Configurable- Design on wheels, with countertops, even on the walls.

Polymer Construction- Maintains function and aesthetic over time.



Starsys. It's a concept worth thinking about.



Metro incorporates several elements in its product design to support a facility's cleaning protocols:

- Microban® antimicrobial protection helps prevent the growth of stain and odor causing bacteria on the product.
- Advanced polymer and other proprietary finishes provide corrosion resistance
- Smooth rounded corners to allow for easier cleaning

Look for the "red check" symbol for this added protection.



Thinking Systems.

Let's face it, a good system just works better. It's more efficient. It's fully integrated. It uses every square inch of space to your best advantage, and it delivers the capability of fully interchangeable components — an absolute necessity in today's ever-changing work environment. All of which makes you better prepared to meet change head on. The Starsys System is complete, modular, and welcomes change. Please take a closer look inside this high-efficiency system.



Starsys™ is a Polymer System —
Will not rust, dent or chip!

- A. Mobile Cart Solutions
- B. Moveable Modular WorkCenter Solutions
- C. Stationary Modular WorkCenter Solutions
- D. Stationary Modular Cabinet Solutions
- E. Overhead Storage Solutions



B

C

E

Perfect Synergy.

The synergy of a system: Starsys components function the way your Team functions—efficiently. Well-planned aesthetics and modular components let you choose the precise accessories for configurations that enhance efficiency without sacrificing visual appeal.





A. Doors are available in multiple heights, locking or non-locking and clear or opaque.

B. Tambour doors can be opened (fully or partially) without ever intruding on work or storage space.

C. Modular design allows for a mix of open (shelves) or closed (drawers) storage solutions.

D. Specialty accessories are available to properly store supplies, like hanging catheters.

E. The system design allows open spaces for kneeholes, refrigerators and other special requirements.



D

C

E

A

Precise Procedure.

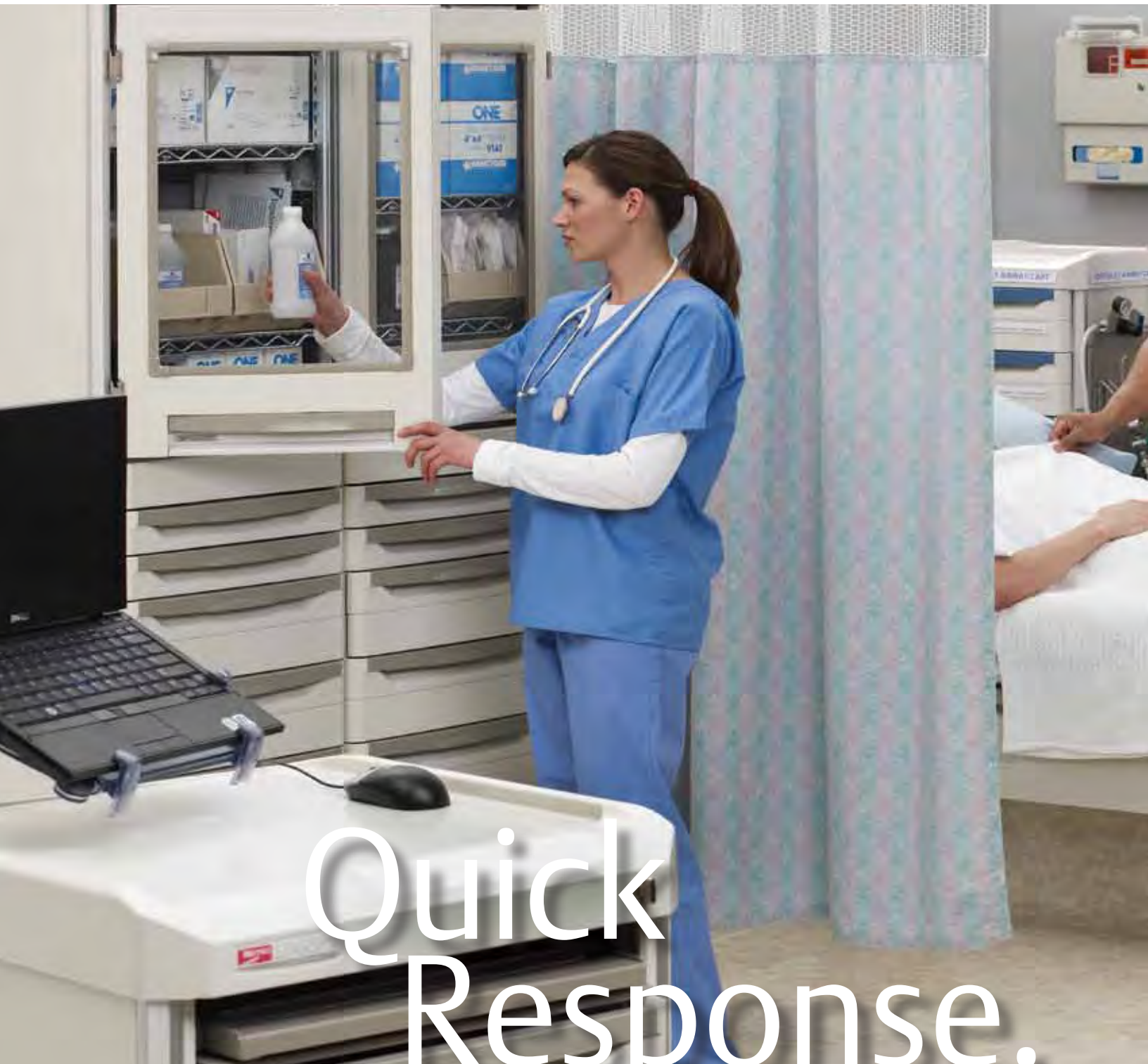


Precise, yet unobtrusive: Create a perfect setting for any procedure. The advanced polymer construction of the Starsys system will not dent, chip, rust, or corrode. High-endurance work surfaces and base units are designed for easy cleaning. Key components, i.e. scope storage, supply transport and procedure carts, can be integrated for seamless aesthetics and functional efficiency.



- A. Drawers are available single wide or double wide for storage of larger instruments.
- B. Overheads can be wall mounted or attached to mobile work centers.
- C. Specialty storage solutions for expensive equipment like scopes are standard in Starsys.

- D. Even though modular in design, customized installation can give the appearance of a built-in.
- E. Various countertop materials are available including laminates, solid surfaces and stainless steel.



Quick Response.



Check your pulse: When the pace quickens, the Starsys system keeps up. Interchangeable modules let you adapt to changing scenarios, diverse work styles, and wide-ranging needs. The system can be configured into bedside, procedure and supply carts, as well as task-specific workcenters. Mobile computing configurations combine supply storage and bedside documentation—saving you precious space.



Areas such as the Emergency Department have varying case loads and requirements on a daily basis. In addition, they must mobilize or reset to address dramatic changes in process and flow, as experienced in disaster response. All configurations shown here are on wheels to provide ultimate flexibility to reconfigure the space at a moments notice.

Procedure Carts



Configurations range from the very basic to fit within space constraints or budget limitations, to the sophisticated that provide the added functionality required by Anesthesia, Specialty Procedures and other critical applications.

Accessory options and mounting flexibility are available to meet a wide range of applications.

A simple procedure with





Easy-exchange, easy-clean drop-in drawer totes and pullout work surfaces improve workflow.

Unique side storage units provide key benefits:

1. Saves Time—keeps more supplies at the point of care.
2. Reduces Strain—access side storage at the front of cart.
3. Rationalize Equipment—expandable work surface negates need for ancillary equipment surfaces.
4. Maximizes Floor Space—side storage units can close when not used.



with endless possibilities.

Users' personalities vary and as such they have a unique way to work. We thought about this, then developed a procedure cart platform that can be configured to meet the needs of the user as well as the application, so you can standardize on a solution that will work. From Bedside Carts and Mobile Computer Stations to specialized applications for Medications, I.V. Therapy and Critical Care, we thought of everything—especially you.

Everything? Even the ability to keep you running with the latest technology needs. Our cart platform can integrate keyboards and monitors. Have a need to stay connected while mobile? We'll even integrate computers and power without sacrificing functionality.

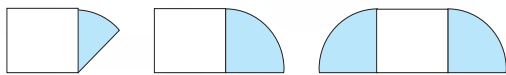
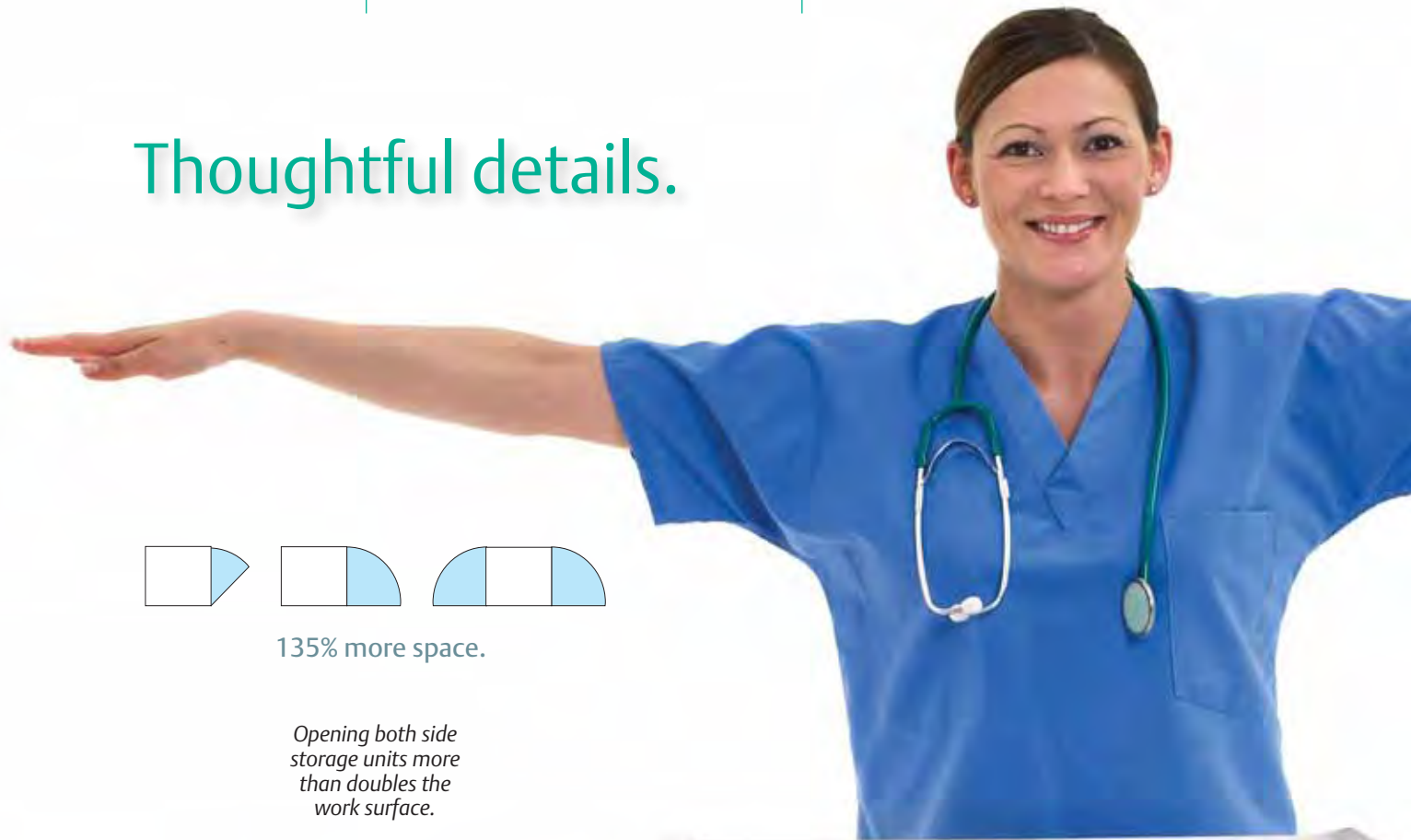


Passive locking with plastic seals provides a level of visual security that indicates potential supply discrepancy without compromising access.

Keylocks maintain cart security by allowing only authorized users with keys access to supplies.

Electronic locks provide authorized access without the use of keys. Optional upgrades include audit tracking, access reports and card reader entry.

Thoughtful details.



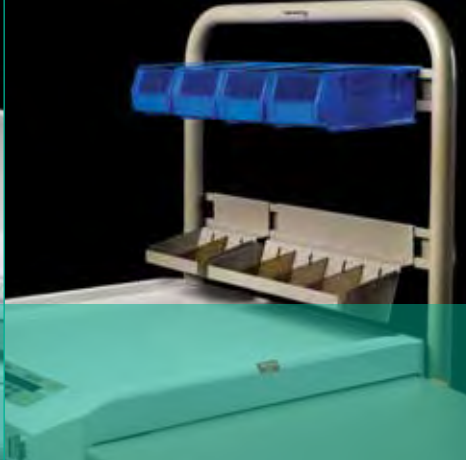
135% more space.

Opening both side storage units more than doubles the work surface.





Pull out side shelf adds workspace when needed, without adding to the cart's footprint, when stowed.



Overbridge storage options help organize clutter off the workspace and provide a convenient location for electronic equipment.



A variety of accessories are available to make your solution smarter.



Drawer label holders provide a neat method of identifying drawer contents.



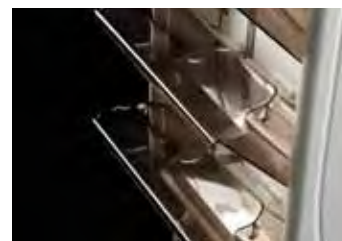
Drawer dividers are critical to maintaining an organized storage space.



Easy-exchange, easy-clean drawer totes drop into drawer frames.



Drawers are removable and interchangeable without tools.



Translucent tilt-out side bins add handy visible storage. Optional locks keep contents secure.



Tilt-out side storage bins can be locked for additional secure storage.



Side storage units offer a variety of accessory options.

Supply Carts



Double wide tall cabinets provide flexible storage options including small item storage in drawers, bulkier storage on shelves, even hanging solutions for taller items.



Maximum storage capacity can be achieved utilizing full extension double wide drawers or shelves. Configure with clear doors to provide visual inventory without sacrificing security.



Single wide tall units use vertical storage space to make up for floor space that you may not have available for storage. These units can be configured with shelves and optional doors or a combination of drawers and shelves with doors.

A healthy supply of opt

Whether short or tall, narrow or wide, Starsys supply carts can be configured in countless ways to customize your storage space. And with drawers and shelves and accessories for general storage and specialty modules for catheters, scopes, sutures and the like, customization becomes a standard feature.



Tambour doors are an alternative solution to secure contents, whether visually or under lock and key. Tambour doors are ideal for crowded areas where the door swing is not always practical.



This dual function accessory provides high density hanging storage as well as shelf storage.



Pullout module provides dense storage without compromising visibility to key supplies.



Optional push handles provide an ergonomic means to maneuver carts.



Easy-exchange, easy-to-clean full extension drawer totes and baskets provide contained storage behind doors.

solutions delivered to you.



As always, the Starsys System lets you customize and modify any cart to meet your special requirements. And that's especially true for your enclosed supply storage needs. Sized to meet your needs — short, tall, and in three widths — you can virtually be assured of the right solution. When in doubt, just contact a Metro Healthcare Professional. That's thinking.

Mobile Workcenters



Kneehole configurations offer space for seating or under-counter equipment.



Mobile workcenters are highly configurable as single, double or triple wide solutions.

Space you need, where





Optional overhead cabinets or open storage provide instant access to supplies or equipment.

Caster Options



B3P-TL

3" Total-Lock Caster:
Utilize 3" total-lock plate casters for limited mobile applications or when additional storage area is required.



B5PC-TL

5" Total-Lock, All-Polymer Caster:
Recommended for corrosive environments. All-polymer total-lock plate caster is an economical alternative to stainless casters.



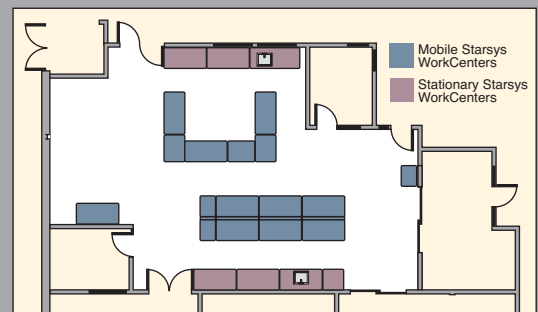
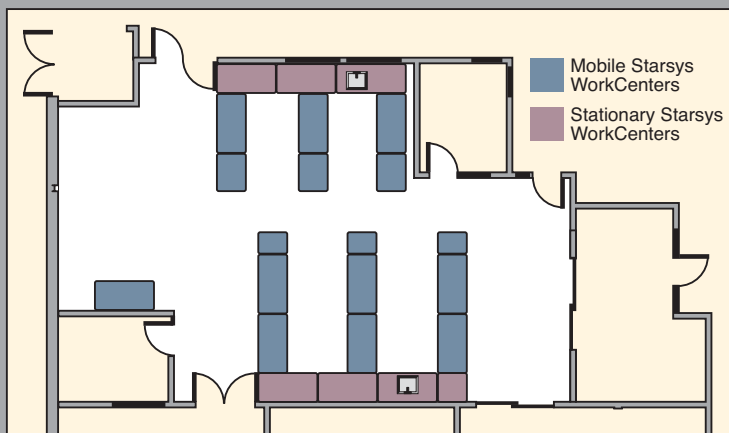
B3N-AS

Stabilizer/Leveling Caster:
Recommended for applications where benchtop equipment demands unit stability and/or a level worksurface. Engage caster foot for stability, release for mobility.

One thing is certain, what you design today will not be adequate as your needs change and grow. Starsys mobile workcenters remove that uncertainty by providing you the flexibility to reconfigure your workspace or if need be, move it, to afford you to keep pace with your needs.

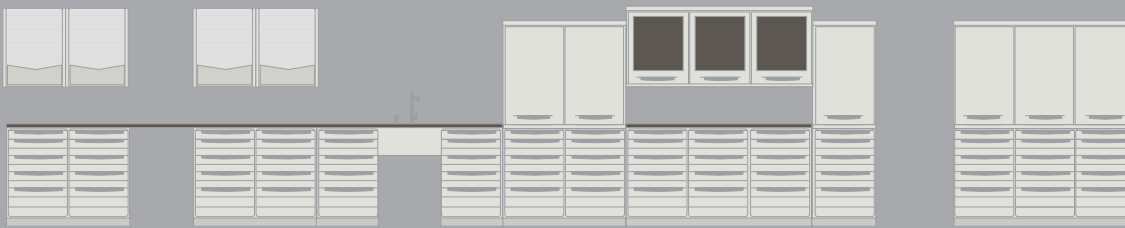
e & when you need it.

Starsys Mobile WorkCenters, when combined with stationary WorkCenters, can facilitate a fast and easy reconfiguration in under 20 minutes.



Stationary Workcenters

A smarter design that's



Work functions change almost without warning. Starsys WorkCenters are designed to be reconfigured. Modular components — doors, drawers, adjustable shelves, full extension shelves, even colors and accessories, can be interchanged to create a highly workable, highly adaptable solution. One that works.



Specialty cabinets provide, specialized storage for items like scopes and catheters, where needed.

Overhead storage is an optional way to maximize storage space. Overheads are available with clear or solid swing doors or space efficient tambour doors.



Whether you have a mobile work center or a modular stationary configuration a quality countertop for the application is key to maintaining a long lasting functional workspace. A broad selection of countertops from solid surfaces and laminates, to stainless steel are available to provide chemical or corrosion resistance or to simply offer a color to match the décor.



s built-in to fit in.



Optional slide-out catheter storage module provides a safe, well organized storage system.



Optional sloped top keeps units free of top surface dust and discourages storage on top of cabinet.



Wire shelves provide heavier duty storage and are available single or double wide in fixed or full extension.



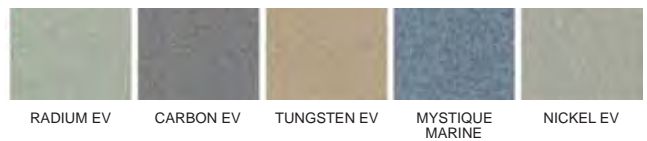
Polymer shelves easily adjust and provide a smooth surface to minimize costly tears in packaging of sterile supplies or wrapped instruments.

Laminate & Solid Surface Colors

Solid Surface



Laminate



Note: Epoxy Resin, Phenolic, and Stainless Steel work surfaces are available.

Drawer/Door Pull Colors



DARK TAUPE WHITE CODE BLUE RED ORANGE GREEN YELLOW SLATE BLUE PURPLE PINK BLACK



Metro Top Track™ High Density Storage System



MetroTrux™ Convertible Linen Truck



MetroMax i™ Supply Cart



Solutions for easy transport and access of surgical supplies.

Metro's line of high and low profile closed case carts provide the most combined storage capacities in their five sizes than any competitor on the market. Ergonomically designed handles, reduced footprint and your choice of stainless steel or polymer casters provide you with superior maneuverability. Access contents with roller shelves that extend easily and quietly, even at the lowest levels.



MedDispense™ Series Medication Management



Super Erecta® Suture Cart



Metro® Polymer Utility Cart



Super Adjustable Super Erecta® Exchange Cart



Lionville® Series 600



Super Erecta® Catheter Procedure Cart

Still haven't found
what you need?
We have it, just visit
www.metro.com



Flo® Series 1760



Lionville Pharmacy Fixtures



Metro® Convertible Linen Truck



Super Erecta® Security Cart



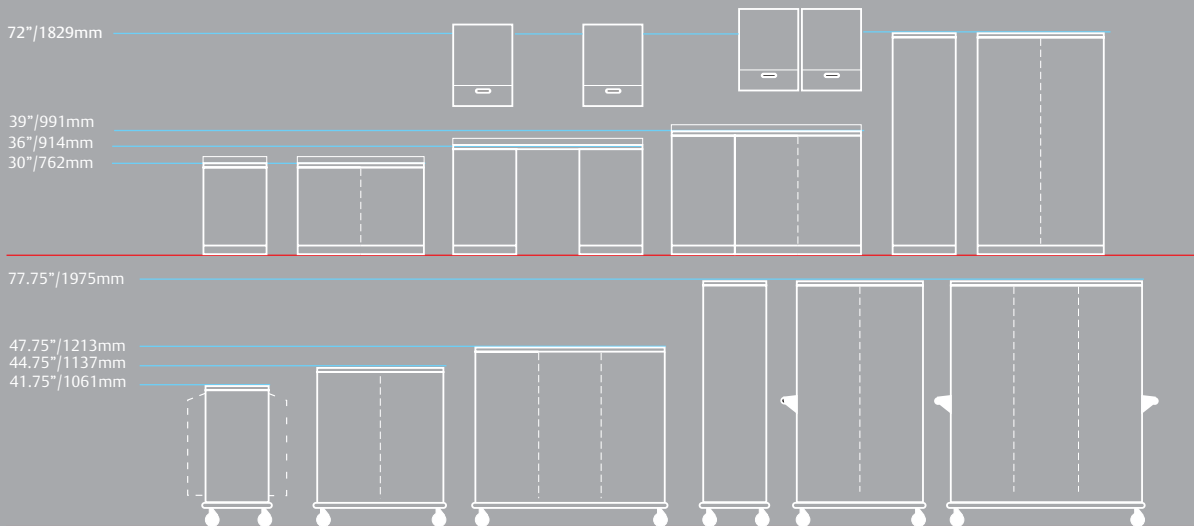
Lifeline® Code Response Cart



Lionville® Series iPoint

Your application. Your solution.

The Starsys Healthcare System, designed to be a fully-integrated, fully-adaptable, modular storage system, is based on three basic components: single-, double-, and triple-wide configurations. Available as open shelving, open carts, or as enclosed storage or transport units, these three basic modules can be configured quickly and easily with interchangeable system components.



The Starsys system is completely modular. Combinations of various sizes can fill your floor or wall space to fit your precise needs. Individual drawers and other specialized components can be easily reconfigured as well, enhancing space and task efficiency.



LO4-107

© 2010 InterMetro Industries Corporation, Wilkes-Barre, PA 18705
The Emerson logo is a trademark and a service mark of Emerson Electric Company.



MICROBAN is a registered trademark of Microban Products Company.



www.metro.com/contactus
1.800.992.1776



EMERSON. CONSIDER IT SOLVED.™